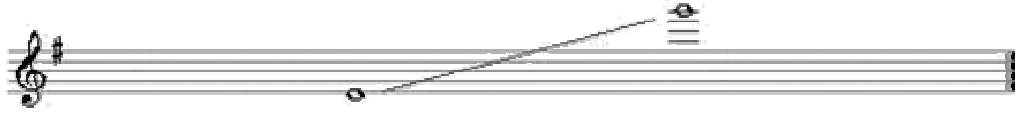


民族乐器音域表 Chinese Instrument Pitch Range

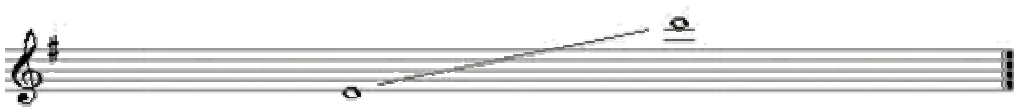
梆笛 Bang Di (Northern China bamboo flute) The key often used: C D G F



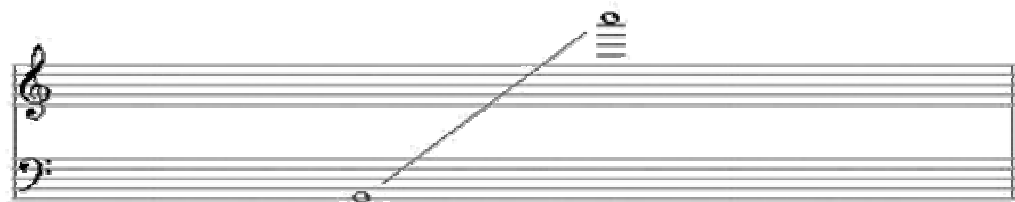
曲笛 Qu Di (Southern China bamboo flute) The key often used: C D G F



箫 Xiao (Vertical Bamboo flute) The key often used: G D F C

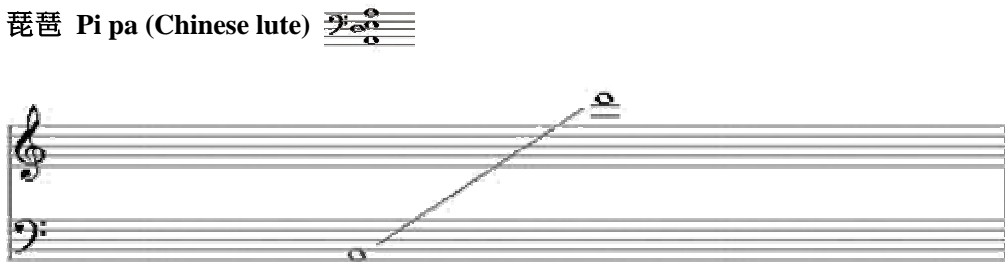


扬琴 Yang qin (Chinese dulcimer)




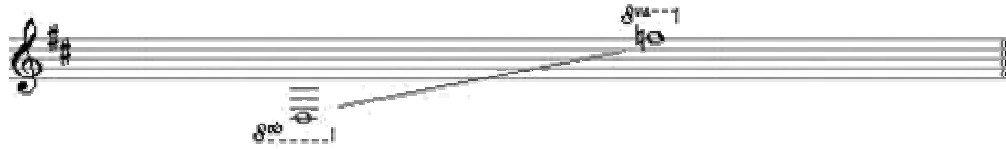


琵琶 Pi pa (Chinese lute)



箏 Zheng (Chinese table harp)

Basically open note  you can change some open note
And the highest pitch is depend on pitch band skill.



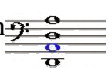
三弦 San xian (Three-stringed Chinese guitar) Open note: 

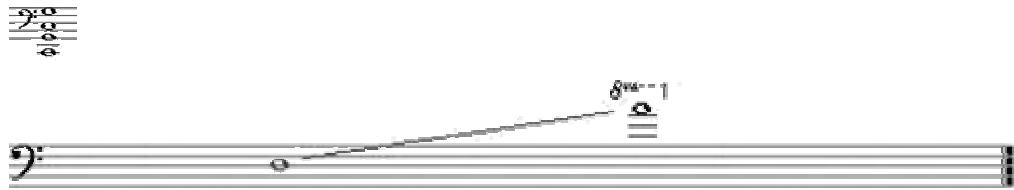


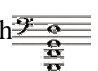


中阮 Zhong ruan (Four-stringed Chinese alto-guitar) Open note: Actually pitch 



大阮 Da ruan (Four-stringed Chinese bass-guitar) Open note: Actually pitch  or



低音阮 Diyin ruan (Four-stringed Chinese bass-guitar) Open note: Actually pitch 






高胡 Gao hu (Southern China fiddle) Open note: 



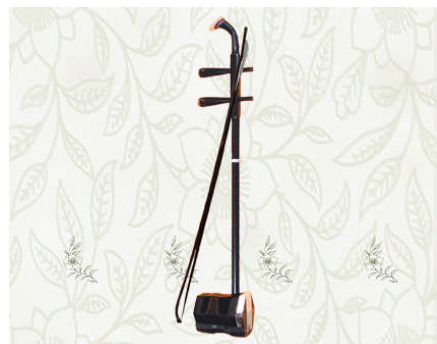
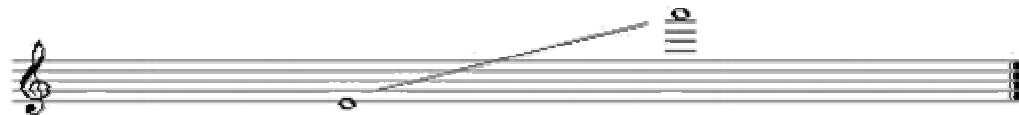
高音板胡 Tenor Ban hu Open note: 



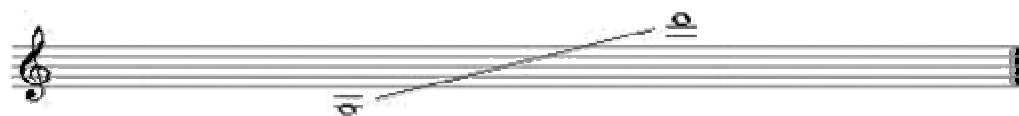
中音板胡 Alto Ban hu Open note: 



二胡 Er hu (Two-stringed Chinese fiddle) Open note: 



中胡 Zhong hu (alto-fiddle) Open note: 



堂鼓 Drum



木鱼 Block



小锣 Xiao luo



小钹 Xiao bo



锣 Gong



板鼓 Ban gu



The Forbidden City Ensemble

Conductor 1 person,

Di player 1 person and he can change Di to Xiao during music performance.

Er hu player 1 person and he can change Er hu to Zhong hu.

Ban hu player 1 person and he can change Ban hu to Gao hu.

Yang qin player 1 person.

Zheng player 1 person.

Pi pa player 1 person.

Zhong ruan player 1 person and she can change Zhong ruan to Da ruan.

San xian player 1 person and he can change San xian to Da ruan or Diyin ruan.

Percussion player 1 and he can also play Vibraphone or some orchestra percussions.